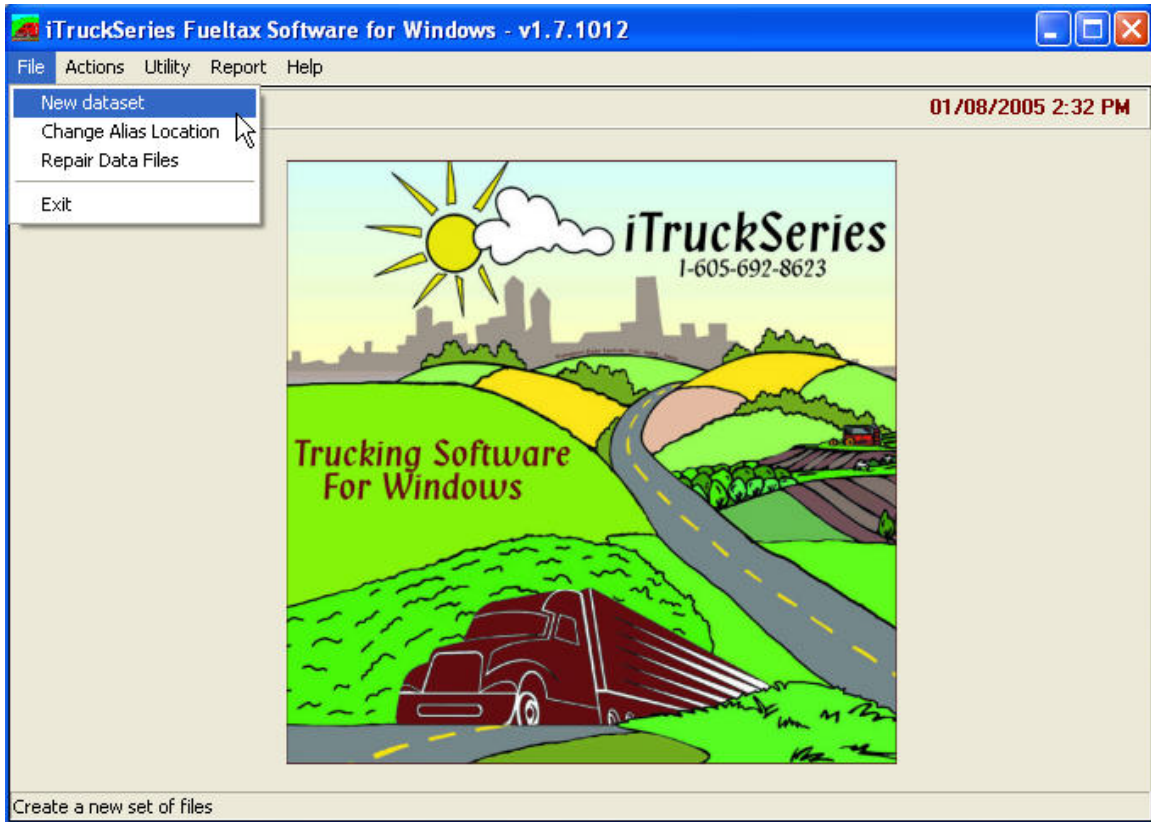


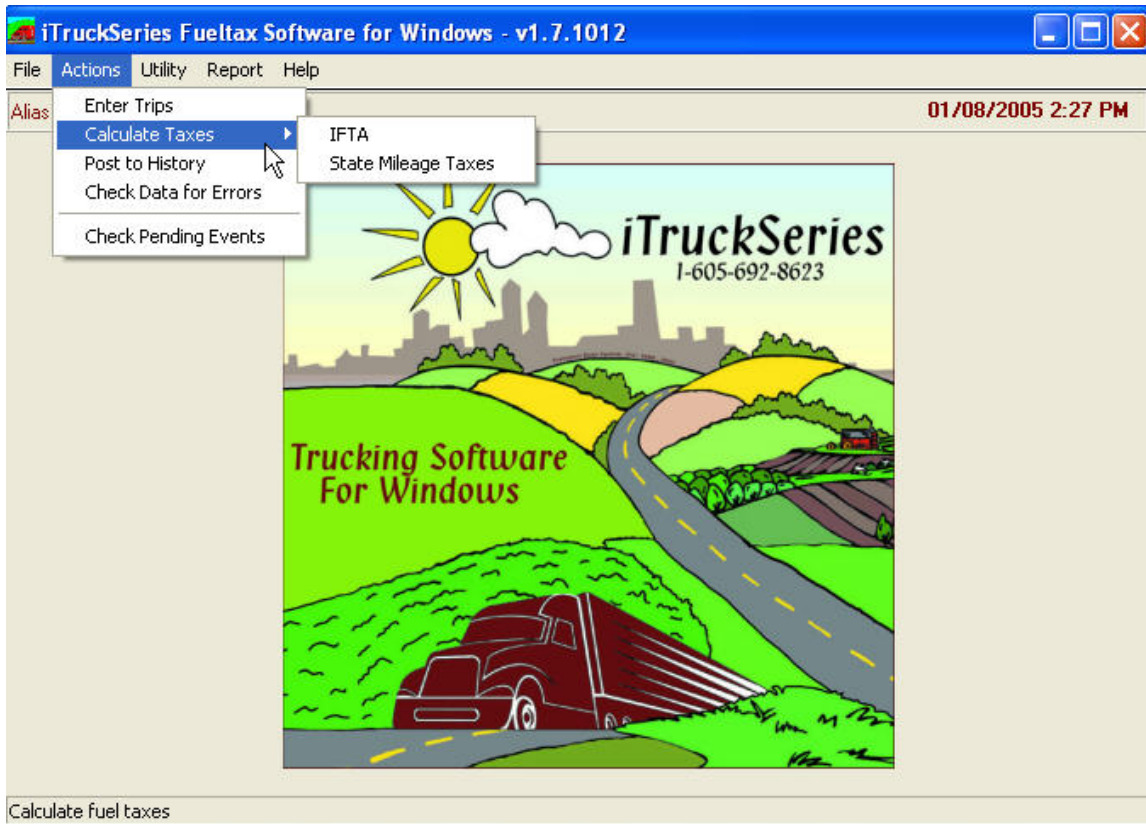
## *Main Bullet Points of the iTruck Fuel Tax Program*



### **File Section:**

- Creating New Companies
- Changing Alias' (switching between companies already built)
- Repair Data Files (in the event of data corruption by power outages,etc.)
- Exiting the program

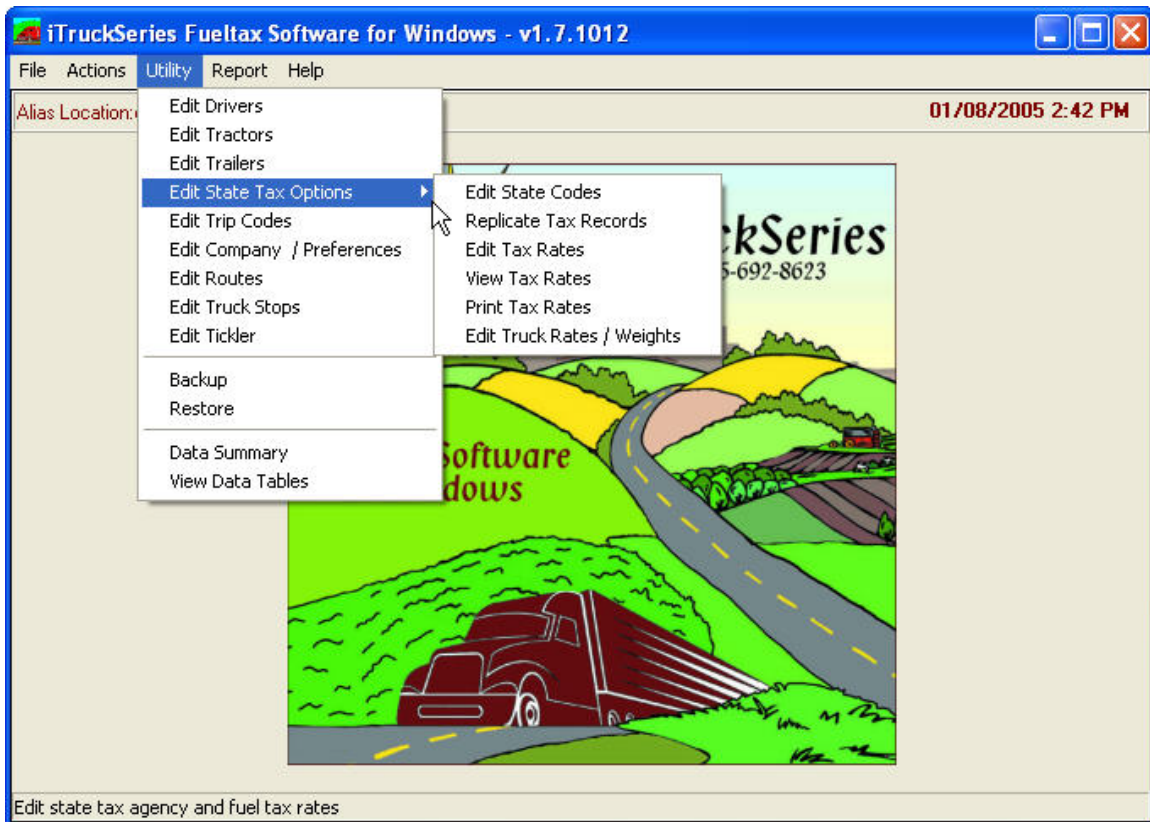
## Main Bullet Points of the iTruck Fuel Tax Program



### **Actions Section:**

- Enter Trips
- Calculate Taxes
  - IFTA Taxes
  - Mileage Taxes
- Post To History
- Check Data For Errors
- Check Pending Events

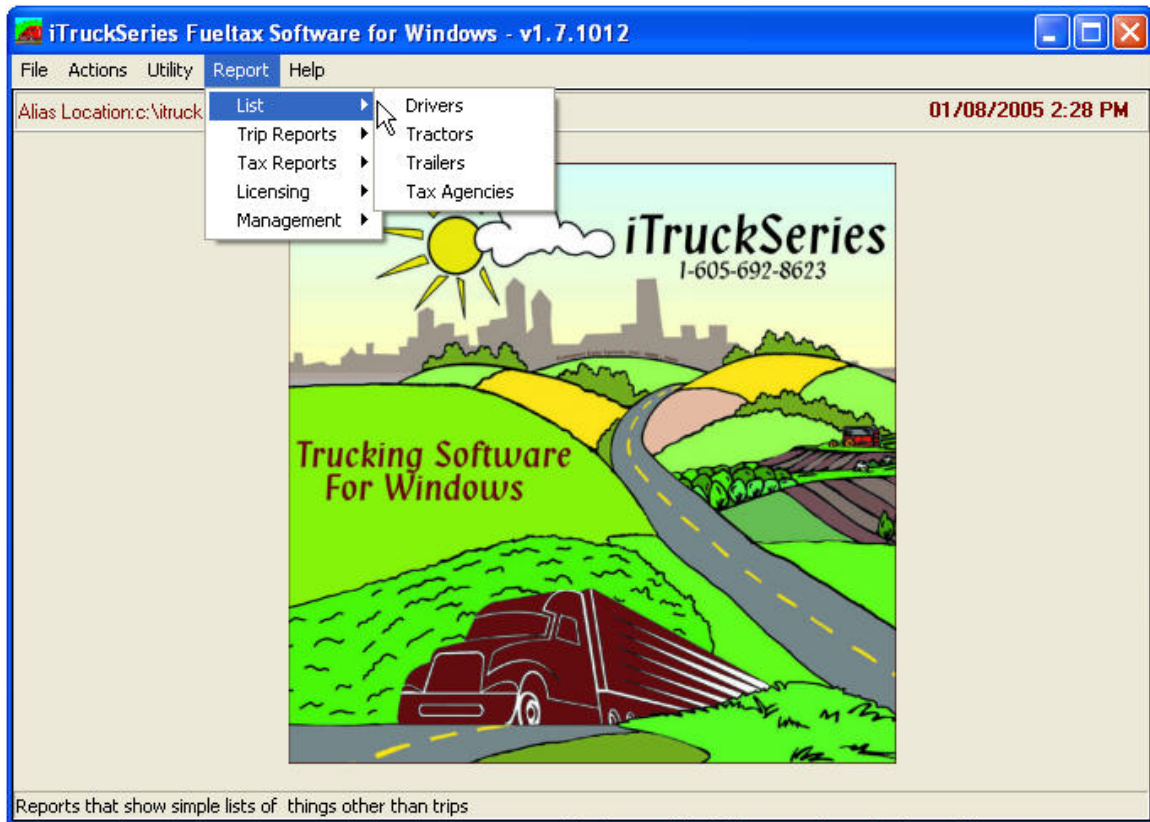
## *Main Bullet Points of the iTruck Fuel Tax Program*



### **Utility Section:**

- Edit Drivers
- Edit Tractors
- Edit Trailers
- Edit State Tax Codes
- Edit Trip Codes
- Edit Company Preferences
- Edit Routes
- Edit Truck Stops
- Edit Tickler
- Backup
- Restore
- Data Summary
- View Data Tables

## Main Bullet Points of the iTruck Fuel Tax Program



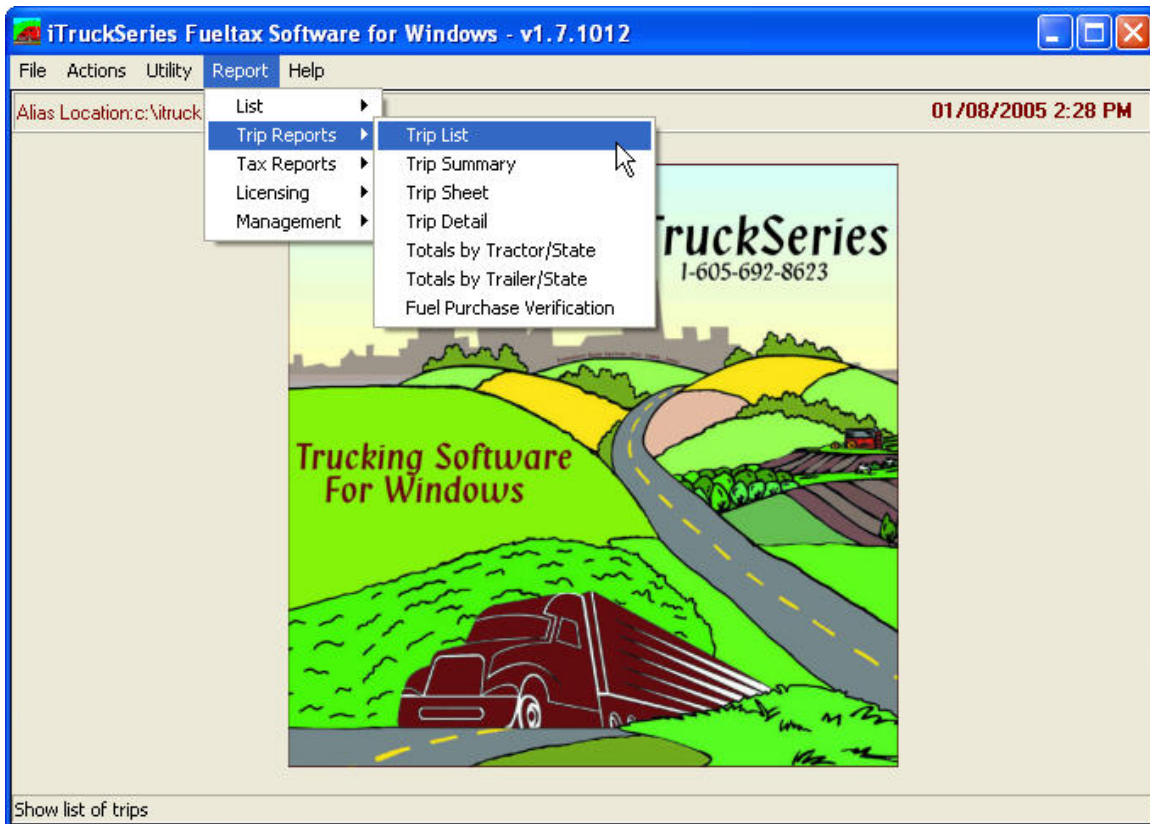
### **Report Section:**

- List Reports
- Trip Reports
- Tax Reports
- Licensing Reports
- Management Reports

### **List Reports:**

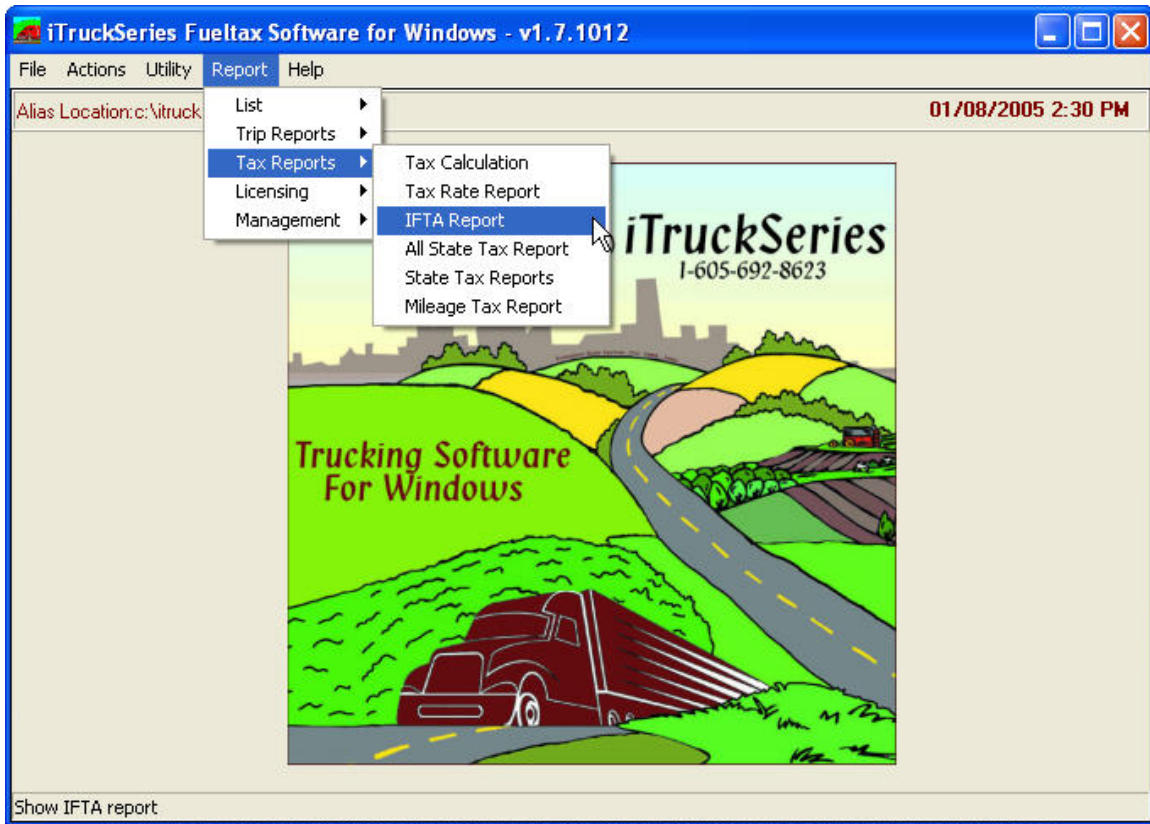
- Drivers
- Tractors
- Trailers
- Tax Agencies

## Main Bullet Points of the iTruck Fuel Tax Program



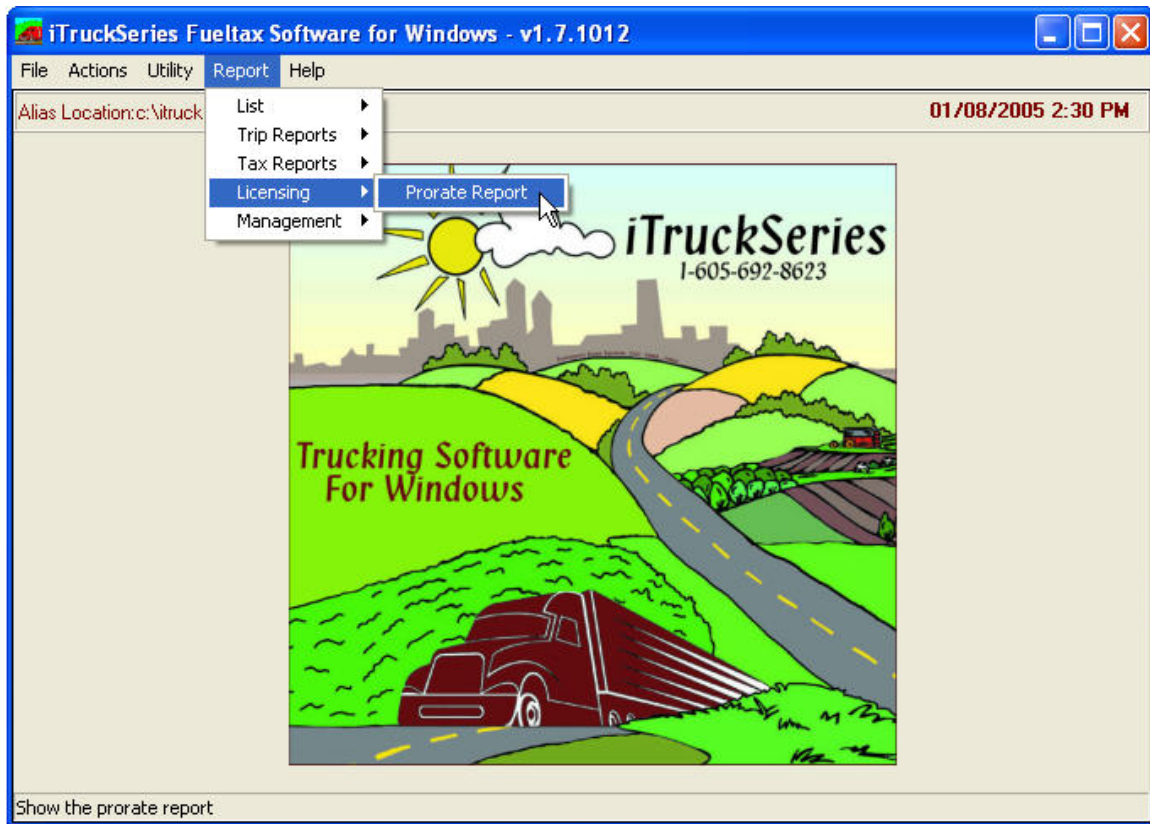
- Trip Reports
  - Trip List
  - Trip Summary
  - Trip Sheet
  - Trip Detail
  - Totals By Tractor / State
  - Totals By Trailer / State
  - Fuel Purchase Verification

## Main Bullet Points of the iTruck Fuel Tax Program



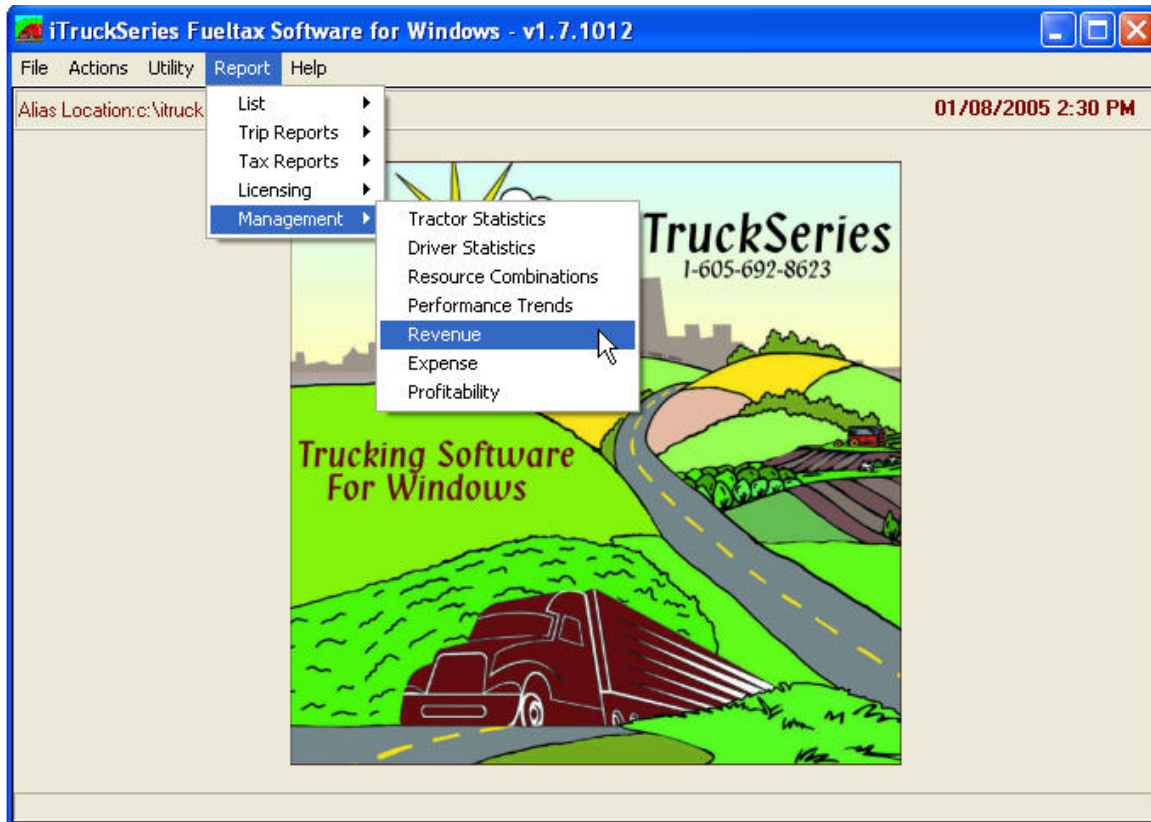
- **Tax Reports**
  - Tax Calculations
  - Tax Rate Report
  - IFTA Tax Report
  - All State Tax Report
  - State Tax Report
  - Mileage Tax Report

## Main Bullet Points of the iTruck Fuel Tax Program



- Licensing Reports
  - Prorate Report

## *Main Bullet Points of the iTruck Fuel Tax Program*



### **Management Reports:**

- Tractor Statistics
- Driver Statistics
- Resource Combination Statistics (Tractors/Trailers/Drivers)
- Performance Trends
- Revenue Reporting
- Expense Reporting
- Profitability Reporting

## Main Bullet Points of the iTruck Fuel Tax Program

### Example Main Trip Entry Screen:

Trip Edit
Trip | Mileage | Fuel | Other Road Expenses | Revenue | Trip Recap | Trip List | Trip Options

Trip Number

Trip ID

Tractor

Trailer(s)

*Generic Added 10/29/20	▲
0001A 1965 TRAILMOE S/A TRLR	▼
0004A 1990 KENTUCK KENTUCKY	▼

Add Trailer

Driver(s)

GEORGE NICHOLAS W	22143 4721 BF	▲
PRIVERA NICK E		▼
STENSEN KEVIN O	422 4TH S BF	▼

Add Driver

### Trip Edit

Start Date

End Date

Starting Odometer

Ending Odometer

Total Miles

Comments

TripDefaults

- New trip # is automatic
- Odometer entry is enabled
- Mileage entry by mileage
- Group from tractor

Selected Trailers

0006A	1994 KENT(KENTU) 4
-------	--------------------

Remove Trailer

Selected Drivers

GEORGE	NICHOLAS	W
PRIVERA	NICK	E

Remove Driver

Space selects current Trailer or Driver. Typing searches by ID or Last Name.

Add
 Edit
 Del
 Save

Close

## Main Bullet Points of the iTruck Fuel Tax Program

### Example Mileage Entry Screen:

Trip Edit

Trip | Mileage | Fuel | Other Road Expenses | Revenue | Trip Recap | Trip List | Trip Options

ItemDate	State	Miles Loaded	Miles Empty
03/08/2010	SD	44	
▶ 03/08/2010	MN	388	

Mileage | Odometer | Route

### Mileage Edit

State:

Date:

Taxable Miles Loaded:

Taxable Miles Empty:

Non Taxable Miles Loaded:

Non Taxable Miles Empty:

Comments:

Current Trip Information

Start Date: 03/08/2010

End Date: 03/08/2010

Trip Number: 328

Trip Mileage

Start odometer: 0      End odometer: 432

Total miles: 432      Remaining miles: 0

Recalc

➕ Add    ✎ Edit    ⬅ Del    💾 Save    📄 ?    🚪 Close

Mileage Search

### 3 Different Mileage Entry Screens are Available:

1. Odometer Entry Leaving State
2. Pre-define Route Mileage By State (for repetitive route haulers)
3. State by State Entry (as shown above)

## Main Bullet Points of the iTruck Fuel Tax Program

### Example Fuel Entry Screen:

Trip Edit

Trip Mileage Fuel Other Road Expenses Revenue Trip Recap Trip List Trip Options

Trip	State	Date	Quantity	Amount
▶ 328	SD	03/08/2010	50	

#### Fuel Expense Edit

State:

Expense Code:

Purchase Date:

Quantity:

Amount:

Unit Price:

Invoice #:

Tax Paid:

Driver:

Truckstop:

City:

Current Trip Information

Start Date: 03/08/2010

End Date: 03/08/2010

Trip Number: 328

Comment

Double click on a truckstop / city from the list below or tab to the fields below to add a truckstop / city.

▶ Starlite	Aberdeen
Truck Town	Beresford
Cenex	Brookings
Martin Oil	Brookings
Kum-Go	Brookings
Pump N Pak	Brookings
Cenex	Clear Lake

Add Truckstop / City to list

Truckstop:

City:

State:

Fuel Expense Search

### Example Trip Recap Screen:

Trip Edit

Trip Mileage Fuel Other Road Expenses Revenue Trip Recap Trip List Trip Options

Trailers

trailerid	make
▶ 0006A	1994 KENTUCKY

Drivers

Name
▶ GEORGE, NICHOLAS W
PRIVERA, NICK E

#### Trip Details

Trip Number	328	Truck ID	0004
Trip ID	328	Starting Odometer	0
Trip Start Date	03/08/2010	Ending Odometer	432
Trip End Date	03/08/2010	Group	

#### Mileage Details

432 miles in 2 Mileage entries	Miles from odometer	432
432 Total taxable loaded miles	Odometer vs. Detail	Same
0 Total taxable empty miles		
0 Total nontaxable loaded miles		
0 Total nontaxable empty miles		

#### Fuel Expense Details

	Purchases	Gallons	Amount	Average \$/Gallon
Tractor	1	50	0.000	0.000
Reefer	0	0	0.000	0.000

#### Other Road Expense Details

Purchases	0	Amount	0.00
-----------	---	--------	------

#### Total Expenses

Purchases	1	Amount	0.00
-----------	---	--------	------

#### Revenue Details

Receipts	0	Amount	0.00
----------	---	--------	------

#### Trip Profitability

MPG	8.64	Revenue / Mile	0.00
Profit / Mile	0.00	Cost / Mile	0.00